

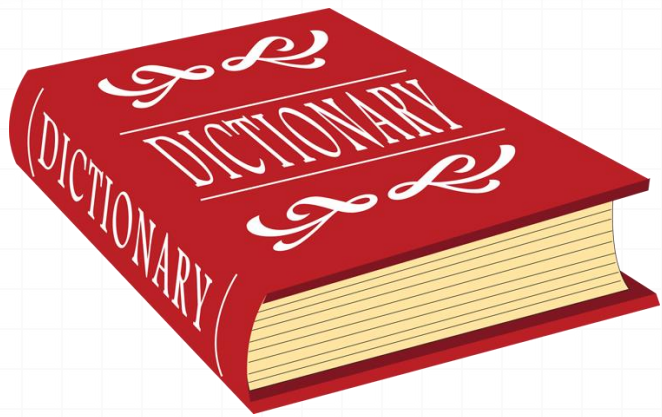
What's the Buzz about Inclusion?

March 1, 2016
University of Montana
Rural Institute for Inclusive Communities

Questions to Be Explored

- What is *inclusion*?
- What is not *inclusion*?
- What does it look like?
- Why does it matter?
- How can we make it happen?





Definitions

- o “An inclusive environment is one that replicates the natural proportion.” “Inclusion means all people, in all environments, all the time...”

(Kathie Snow, “What Is Inclusion? What’s Not?”)

- o “Inclusion is being a part of what everyone else is, being welcomed and embraced as a member who belongs.”

(Kids Together, Inc., <http://www.kidstogether.org/inclusion.htm>)

- o “.. a sense of belonging: feeling respected, valued for who you are; feeling a level of supportive energy and commitment from others so that you can do your best.”

(Miller and Katz (2002), as cited on Keys to Inclusion website:

http://www.keystoinclusion.co.uk/what-is-inclusion-2/?doing_wp_cron=1456715780.1138169765472412109375)

“I think one of the core qualities desired by the people with disabilities I have known is social belonging. By that I mean being a part of things, including something meaningful to do and a good home in a place where they can have fun with their friends and family.”

(Dileo, D. 2007. *Raymond's room*. St. Augustine: Training Resource Network, Inc., Page 117)

Belonging

- Be cautious in what we support as “inclusive”
- Physical inclusion \neq social inclusion
- Relationships (marriage, clubs, community, church, family, work, etc.) create resilience...they act as buffers to protect us from tough times and tough situations





Inclusive or Not?



- Students with disabilities attend neighborhood school but stay in separate classroom all day
- Local service club membership includes a number of individuals with disabilities who participate alongside people without disabilities
- Basketball team for youth with disabilities
- Basketball team for all middle school students
- Play at community theater – actors/actresses are people with and without disabilities
- Dance for teens with disabilities at local youth center

Dr. Martin Blair



UM Rural Institute 2016



WHAT IS INCLUSION ANYWAY?

MARCH 1, 2016

Rural Institute

Promoting Inclusive Communities

THE NATION'S “PROPER” GOALS...

- Assure Equality of Opportunity
- Full Participation
- Independent Living
- Economic Self-sufficiency



50 YEARS OF DISABILITY CIVIL RIGHTS ACTIVITY

ACCESS



WHAT'S NEXT?

1960s

'70s

'80s

'90s

2000s

'10s

10

INCLUSION...

ACCESS
+ BEING THERE
= ALL THAT **AND**
PARTICIPATION



INCLUSION REQUIRES

- Accessible SPACE
- Accessible ACTIVITIES and PROGRAMS



SHARED EXPERIENCES

WHAT IS INCLUSION? SCHOOL

Devin's Story

WHAT IS INCLUSION? HOME

Sierra's Story

WHAT IS INCLUSION? WORK

Allen's
Story

Lissie's
Story

WHAT IS INCLUSION?

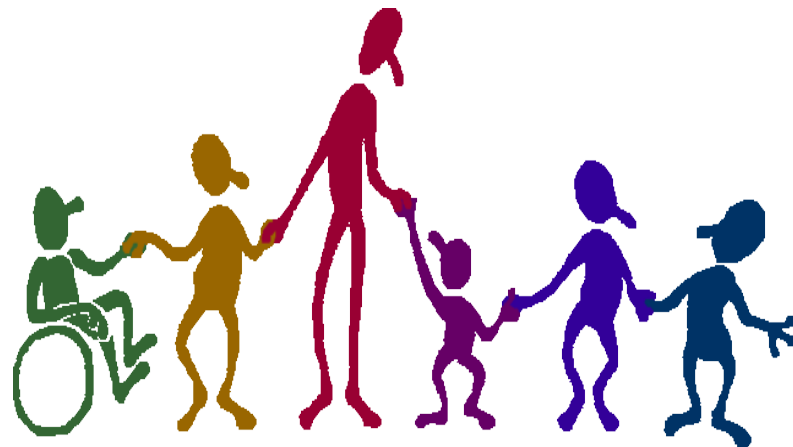
DECISIONS



Where do I live?
What do I eat?
Where do I work?
What should I wear?
How do I spend my
time?

WHAT ABOUT YOU?

- What decisions do you make?
- What decisions do you WANT to make?
- Who can help you? More importantly, WHO do you trust to help?
- What will you do to prepare yourself to be more included?



Maclaen Burningham

Consumer Advisory Council Hard at Work

Community Investment Fund

Community Investment Fund Mini-Grant Application - Adobe Acrobat Reader DC

File Edit View Window Help

Home Tools Community Invest... x

1 / 4 120%

Community Investment Fund Mini-Grant Application

Please note: Community Investment Funds are to be used for projects or programs that help people with disabilities live, learn, work, and/or play in inclusive ways in their communities. "Inclusive" means alongside people without disabilities.

Who?

1. Name of project contact person:
2. Name of another project contact person:
3. Organization name:
4. Address (street address, city, state, zip code):
5. Email address:

Export PDF
Create PDF
Edit PDF
Adobe Acrobat Pro DC
Easily edit text and images in PDF documents
Learn more
Comment
Fill & Sign
Send for Signature
Send & Track
Store and share files in the Document Cloud
Learn More

EN 12:05 AM 2/14/16

<http://ruralinstitute.umt.edu/news/227-community-investment-fund>

Advertising the CIF

Rural Institute
Promoting Inclusive Communities

Do you have an idea for an INCLUSIVE Community project or program?
FUNDING is AVAILABLE

Who can apply?

Any Montana organization, agency, non-profit group, or individual with a creative idea that promotes inclusion

What is Community Inclusion?
Projects or programs that help people with disabilities learn, work and play as full members of the community

Where Do I Apply?

<http://tinyurl.com/ruralinstitute>



To all who serve people with disabilities
Announcing:



FUNDING AVAILABLE

The University of Montana Rural Institute
Community Investment Fund....

is a small pot of money (\$2,000.) the Rural Institute has made available for innovative projects or programs that will help people with disabilities live, learn, work and play in their communities alongside people without disabilities.

Who is eligible to apply:
Any Montana organization, agency, non-profit group, or individual with a creative idea to promote community inclusion for Montanans with disabilities.

Application deadline:
July 31, 2015

Successful applicants need to spend their Community Investment Funds by December 15, 2015

For an application and more information contact:
Kim Brown
brown@ruralinstitute.umt.edu

4 Applications Coming In...



5 First CIF Funds Awarded!

Come join us on Friday, November 20th @ 7pm
as we present the...

**BASE
SHOWCASE**

A Missoula Community Variety Show



Applications for 2016 funding will be available March 1st.
The application deadline is May 1st.

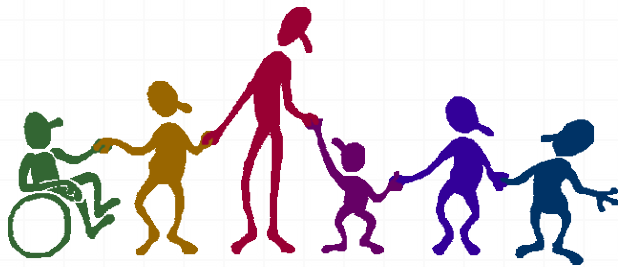
Please note: Funding is for Montana projects only.

⁷ Inclusion helps people feel more comfortable...

8

Inclusion Feels Great!!!

9 How can we make inclusion happen?

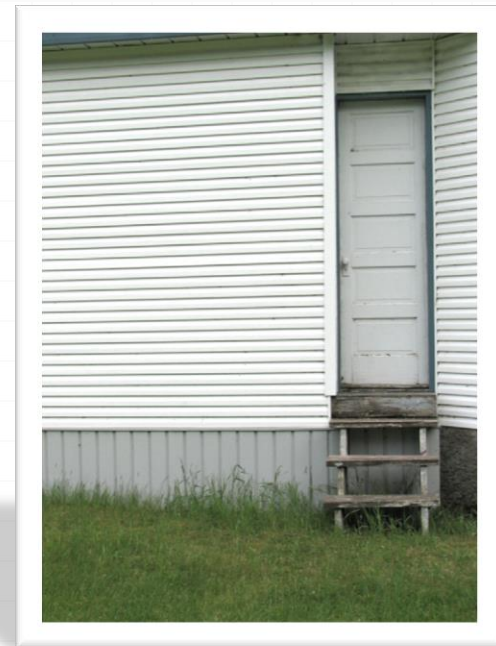
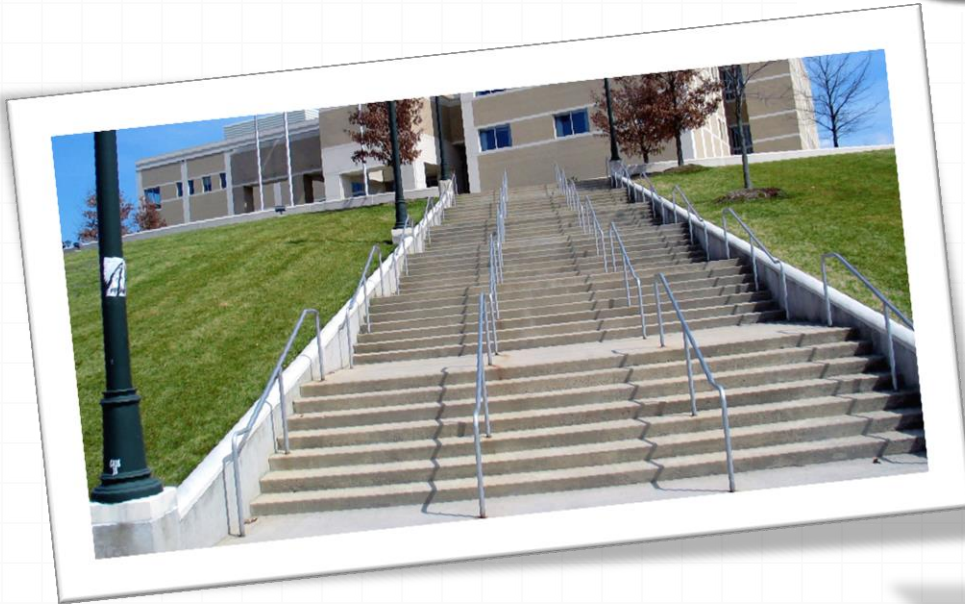


10

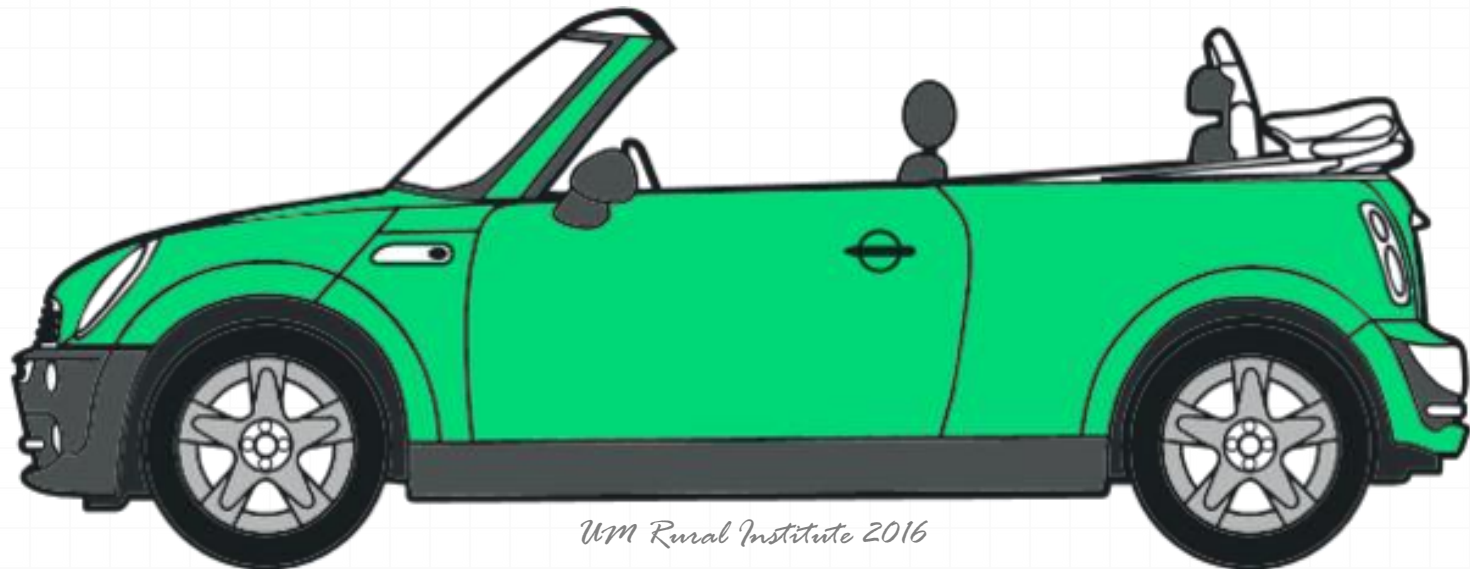
Inaccessible



Inclusive



11 Consider Transportation



UM Rural Institute 2016

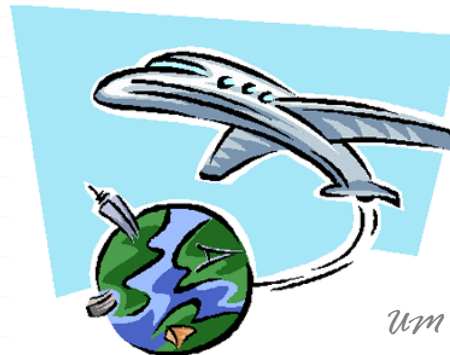
12 Be Reliable, Be Respectful




13 We are all in this
together!



Mathalia Stroethoff





My name is Mathalia Stroethoff.
I graduated from high school June 2013.



I am active in my community.



- ❧ At Missoula Children's Theater I volunteer as an usher.
- ❧ At the University Rec Center I take classes such as Oula, Barre, and Pilates.

.



I swim at the Grizzly Pool.



- ❧ High School and Club swimming are all done. As an adult, I enjoy Adult Coached Lap Swim.

Helen is my Swim Coach.

- œ Helen Houlihan is head Coach for Missoula High School Swimming and she coaches Adult Coached Lap Swim at the Grizzly Pool.
- œ I text her in the morning; she picks me up in her car; we dance to Oula music on the way to the pool!



I work at Ink Realty Group.

- Prepare listing files for agents
- Photocopying as needed
- Distribute mail to agents
- Recycling

•



I work at The Writing Center.



- ❧ I enter log-in slips data into the computer data base.
- ❧ I have been working here since Summer 2012.



Kelly is my boss.

- ☞ Kelly Webster is the Director of The Writing Center at the University of Montana.
- ☞ I like to take photos at the parties.

Resources



- o *Mainstreaming, Integration, Inclusion: Is There a Difference?* by Kathie Snow
 - o <https://www.disabilityisnatural.com/library.html>
- o *What Is Inclusion? What's Not?* By Kathie Snow
 - o <https://www.disabilityisnatural.com/library.html>
- o "Inclusion Is Belonging" YouTube Video
 - o https://www.youtube.com/watch?v=n_qgW9FWEgQ
- o Inclusion Network website
 - o <http://www.inclusion.com/inclusion.html>
- o Kids Together, Inc. website
 - o <http://www.kidstogether.org/inclusion.htm>



This project is funded in whole or in part under a contract with the Montana Department of Public Health and Human Services. The statements herein do not necessarily reflect the opinion of the Department.

